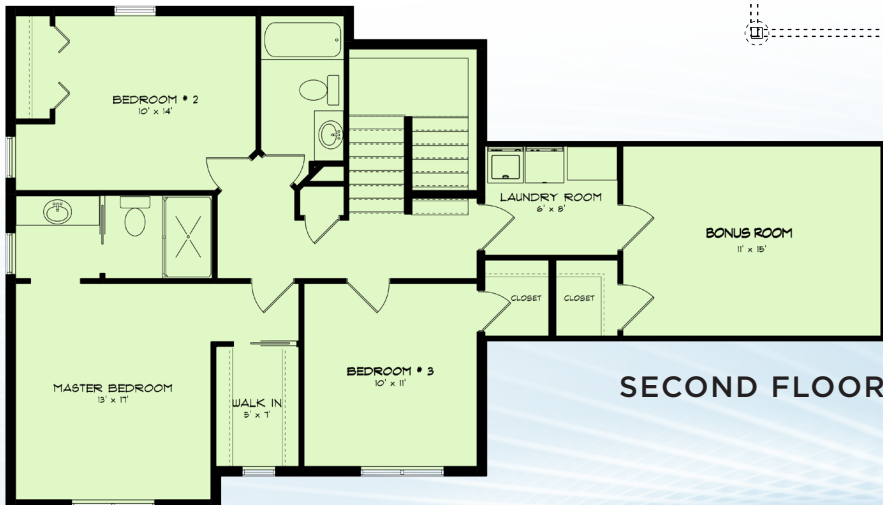
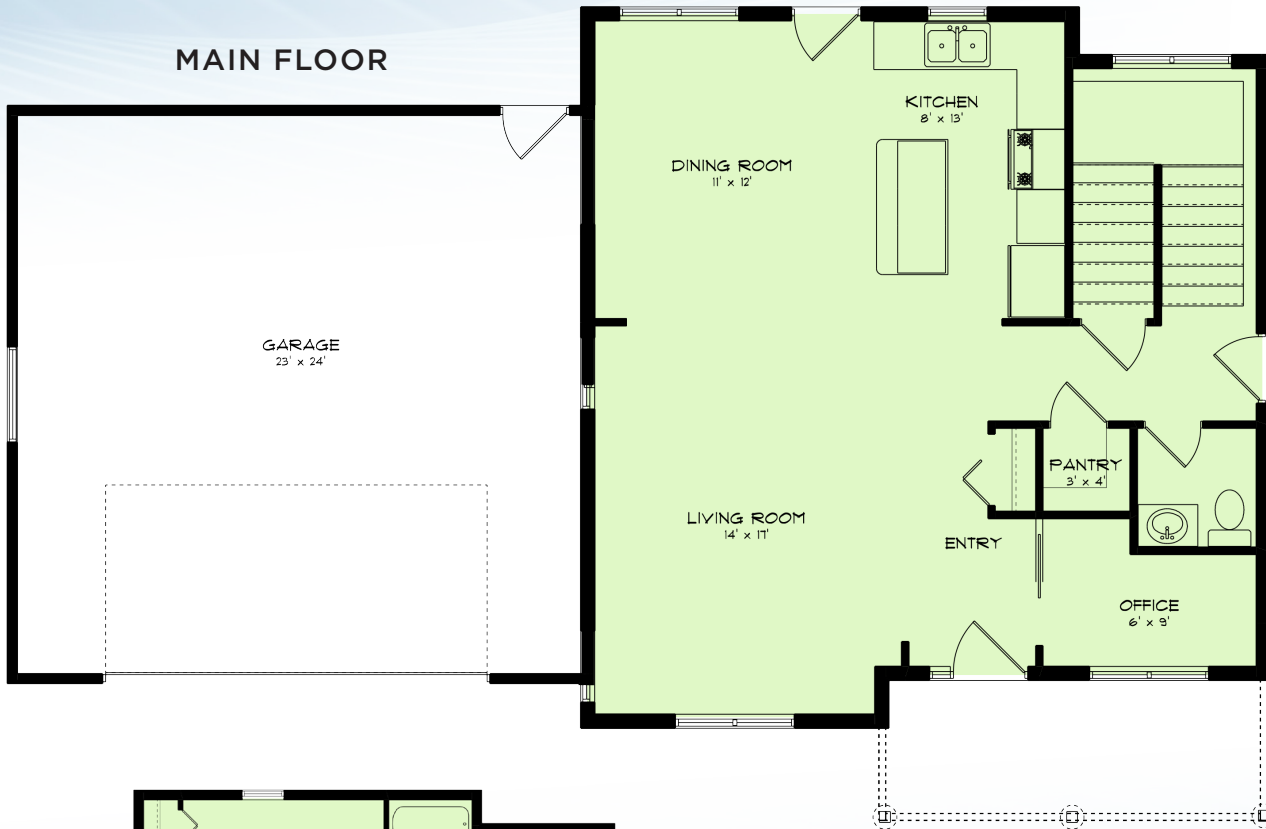


BROOKSIDE



TWO LEVEL
DIMENSIONS: 30' X 53'
SQUARE FOOTAGE: 1,915
BEDROOMS: 3
BATH: 2.5

MAIN FLOOR



SECOND FLOOR



600 4th Street Suite 815 | Sioux City, IA 51101
Showroom | 801 G. Street | South Sioux City, NE 68776 | 402.412.2462